



Illinois
Psychological
Association
www.IllinoisPsychology.org



TRANSFORMATION OF HEALTHCARE: CHALLENGES FOR THE PRIVATE AND PUBLIC SECTOR

**ILLINOIS PSYCHOLOGICAL ASSOCIATION
ANNUAL CONVENTION**

NOVEMBER 10-12, 2016

**THE DRAKE OAK BROOK HOTEL
OAK BROOK, ILLINOIS**



Insuring the Best of Psychology in Illinois

The Trust is a leading provider of professional liability malpractice, financial security, and innovative risk management programs — meeting the insurance needs of psychologists and related individuals in Illinois for more than 50 years.

For Psychologists By Psychologists:

- Professional Liability Insurance
- Student Liability Insurance
- Researcher & Academician Liability
- Income Protection Insurance
- Term Life Insurance
- Auto, Home, and Renters Insurance
- Long Term Care Insurance
- Business Office Insurance
- Office Overhead Insurance
- Retirement Plan Services
- Risk Management Workshops
- Advocate 800 Consultation Service



trustinsurance.com • 1-800-477-1200

**Endorsed by the Illinois
Psychological Association**

Conference at a Glance

ILLINOIS PSYCHOLOGICAL ASSOCIATION 2016 ANNUAL CONVENTION

Thursday, November 10, 2016

7:30AM - 4:00 PM

Registration

Lobby Foyer

7:30 AM - 9:00 AM

Breakfast

Sponsored by TherapyNotes

8:30 AM - 4:00 PM

Exhibits

Three Oaks Ballroom Foyer

9:00 AM - 4:30 PM

Full-Day Workshop

Worry, Panic and Anxiety

Ballroom A/B

Sponsored by IPA Clinical Practice

Mid-Morning Break

Sponsored by Midwestern University

12:00 PM - 1:00 PM

Buffet Lunch

Afternoon Break

Sponsored by Illinois Council on Problem Gambling

Friday, November 11, 2016

7:30 AM - 4:30 PM

Registration

Hotel Lobby

7:30 AM - 8:45 AM

Breakfast sponsored by TherapyNotes

8:00 AM - 4:00 PM

Exhibits

Versailles Ballroom Foyer

10:00AM - 12:00 PM

Student Poster Competition

8:30 AM - 11:45 PM

PROGRAM 1

The Lies We Tell Ourselves: Ethical Pitfalls in Clinical Practice

8:30 AM - 10:00 AM

PROGRAM 2

Whole Health Psychotherapy for Medical Problems and Chronic Illness

8:30 AM - 10:00 AM

PROGRAM 3

Breaking the Cultural and Religious Barriers: Effectively Working with Muslim Clients

8:30 AM - 10:00 AM

PROGRAM 4

Mapping the Territory, Expanding the Field

8:30 AM - 10:00 AM

PROGRAM 5

Transforming Healthcare: Opportunities for Making a Difference and Pivoting Your Career

10:00 AM - 10:15 AM

Mid-Morning Break

Sponsored by Pretzel & Stouffer and Midwestern University

10:15 AM - 11:45 AM

PROGRAM 6

Knowledge for Clinical Psychologist Regarding Public Schools and Special Education

10:15 AM - 11:45 AM

PROGRAM 7

Legislative Advocacy: Advances for Illinois Psychologist

12:00 PM - 1:15 PM

IPA Annual Awards Luncheon

Sponsored by American Psychological Association Insurance Trust (APAIT)

President's Address

Joseph Troiani, Ph.D.

AWARDS

- Distinguished Illinois Psychologist
Karla Steingraber, Psy.D
- IPA Distinguished Service Award for Clinical Scholarship
Sponsored by IPA Academic Section
Neil Pilskin, Ph.D.
- Presidential Recognition Awards
- Legislative Awards
- IPAGS Jennifer Manfre Award
- Student Poster Awards
- Psychologically Healthy Workplace Award
- Other Awards may be added

Friday Lunch

1:30 PM - 4:45 PM

PROGRAM 8

How to Create a Safe Training Environment and Resolve Ethical Dilemmas between Supervisors & Trainers

1:30 PM - 3:00 PM

PROGRAM 9

The Cook County DUI Program: Secondary Addiction Prevention

1:30 PM - 3:00 PM

PROGRAM 10

Healthcare Reform is Here and Evolving Every Day

1:30 PM - 3:00 PM

PROGRAM 11

Neuropsychological considerations of major adult disorders: A review of: Multiple Sclerosis, Parkinson, Traumatic Brain Injury, Alzheimer's disease, and Depression.

Sponsored by Illinois Psychological Association Graduate Student Section (IPAGS)

3:00 PM - 3:15 PM

Mid-Afternoon Break

Sponsored by Daniel Weitzman, CPA, JD LLC

3:15 PM - 4:45 PM

PROGRAM 12

Could It Be Adult ADHD? Recognition, Assessment and Treatment

3:15 PM - 4:45 PM

PROGRAM 13

Is Gray Divorce Different Healthwise, Moneywise, Otherwise for Those 50+?

3:15 PM - 4:45 PM

PROGRAM 14

Prescriptive Authority: The Revolution in Healthcare Continues

3:15 PM - 4:45 PM

PROGRAM 15

Designing New Behavioral Care under the Affordable Care Act

3:15 PM - 4:45 PM

PROGRAM 16

Feedback: Giving and Receiving, The Good, Bad and the Just Ugly

5:00 PM - 6:00 PM

Town Hall Meeting: Reduce Violence and Help Build Safer Communities

6:00 PM - 7:45 PM

President's Reception

Flower Room

Saturday, November 12, 2016

7:30 AM - 1:00 PM

Registration

Hotel Lobby

8:00 AM

Coffee and Bakery Breakfast

Sponsored by TherapyNotes

8:00 AM - 8:50 AM

All Association Meeting

9:00 AM - 10:30 AM

PROGRAM 17

Women and Wellness during the Life Span: Hormonal Changes, Weight, Nutrition, and Self-Esteem Issues

9:00 AM - 10:30AM

PROGRAM 18

Developing A Perinatal Behavioral Health Intensive Outpatient Program

9:00 AM - 10:30 AM

PROGRAM 19

Implications of Using a Behavioral Model to Treat Co-occurring Disorders

9:00 AM - 10:30 AM

PROGRAM 20

Movies: The Psychology of Human Behavior

10:30 AM - 10:45 AM

Mid-Morning Break

Sponsored by IPA SOGI Section

10:45 AM - 12:15 PM

PROGRAM 21

Bridging the Gap between Psychologist and Law Enforcement

10:45 AM - 12:15 PM

PROGRAM 22

Responding to the Opioid Epidemic: Psychologists Role on the Inter-professional Team

10:45 AM - 12:15 PM

PROGRAM 23

Doctoral Emphasis in Military Clinical Psychology: Adler University

10:45 AM - 12:15 PM

PROGRAM 24

Suburban Insanity: Factors Associated with Criminal Responsibility Decisions

9:00 AM - 12:15 PM

PROGRAM 25

The NIH Toolbox: A Useful addition to clinical practice

9:00 AM - 12:15 PM

PROGRAM 26

Integrating Neuroscience and Psychotherapy with Emerging Adults



Welcome Letter from IPA President

Greetings,

The 2016 Illinois Psychological Association Annual Convention this year is being held at the newly renovated Drake Oak Brook Hotel located in Oak Brook, Illinois. The location is central to those traveling in from the city and those of you coming from the far reaches of the State of Illinois. Being in the comfort of the Drake Oak Brook you will have the opportunity to attend some great workshops and presentations. This will also be an opportunity to reconnect with colleagues and to make new professional connections.



2

The theme of the conference is the "Transformation of Healthcare: Challenges for the Private and Public Sector". With the legislated transformation of the United States health care system, along with the start of the transformation of behavioral health in the State of Illinois, and the increasing understanding of the importance of behavioral health in health care, the role of the Health Care Psychologist is taking shape. If there was ever a point in our history that we need to be actively engaged in advocating, it is now. Because we are at these tables we are seeing an expanding role of the psychologist along with the scope of practice as evident by the passage of the RxP legislation. In a number of cases the expanding scope of practice will be filling a critical need particularly for those underserved communities. This will provide opportunities for psychologist's in both the public and private sector.

Also, as a profession we seek the application of our evidence informed knowledge and clinical skills in psychology for the better good of society. This requires us as an organization representing the profession to directly speak to those social justice issues confronting society and actively advocate for those socially isolated populations. We are learning that these are determinates of good mental and physical health in our communities. As in 2015 we will again have an IPA Town Hall meeting to address the pandemic of violence in our communities.

Friday evening will make for a fun, relaxing, and enjoyable evening with a tasting of wines from around the world with Sommelier Edwin Badgett III followed by the performance by the "Therapy Players".

Joseph E. Troiani, Ph.D.
President

Not a member of the IPA?

JOIN NOW.

Complete the application on page 21 and mail it with your registration form to obtain the member conference discount.

Deadline Dates

October 18, 2016 IPA Room Reservation Rate Cut-Off Date for the Drake Oakbrook Hotel.

October 14, 2016 Request for Special Arrangements for Persons with Disabilities—Contact the IPA office: 312-372-7610 x201

October 28, 2016 Final Day for Refunds—Contact the IPA office: 312-372-7610

October 28, 2016 Pre-Registration Discount Deadline

Convention Registration

Thursday NOVEMBER 10, 2016

7:30 AM - 4:00 PM
Hotel Lobby

Friday NOVEMBER 11, 2016

7:30 AM - 5:30 PM
Hotel Lobby

Saturday NOVEMBER 12, 2016

7:30 AM - 1:00 PM
Hotel Lobby

Welcome Letter from IPA Executive Director

Dear IPA Convention Attendee:

As Executive Director it has been a pleasure to work with Dr. Troiani on this year's annual convention. I look forward to meeting you and learning more about how the IPA can help you.

This year's programs continue our tradition of providing cutting edge training to help you advance your careers and find new opportunities. Keep in mind that the continuing education hours you earn at this convention will apply to those required by the state. Attend the entire convention and you will earn 15 continuing education hours. The 3 day program includes two luncheons, food breaks, the Presidents Reception & *The Therapy Players* improve group on Friday evening. We will again this year be holding a Town Hall Meeting: *Reduce Violence and Help Build Safer Communities*, presented by IPA's Task Force on Violence. The conference will also give you the opportunity to learn more about what the IPA is doing for you.

I hope that you will take full advantage of the opportunities offered at this year's annual convention. In addition to the learning offered by continuing education programs, the convention also enables you to network with your colleagues, exchange information and to learn from one another. Please be sure to take some time to visit with our exhibitors.

Some of you might remember that Allan Landau professional portrait photographer set up a studio at the convention about 5 years ago. He will be back to take professional heads shots. If you are interested it is best that you schedule a session time.

I would like to take this opportunity to thank Dr. Kim Lemke, IPA Continuing Education Chair and Dr. Laura Faynor-Ciha, IPA President Elect and past CE Chair for their efforts approving each of the workshop learning objectives, which is not a small task.

I look forward to meeting you and working with you for the benefit of IPA members and all psychologists in the state of Illinois.

Sincerely,

Marsha Karey
Executive Director



Legal Professionals Helping Mental Health Professionals

CIVIL LITIGATION	CONTRACTS AND PROFESSIONAL NEGOTIATIONS
RISK MANAGEMENT	ILLINOIS DEPARTMENT OF PROFESSIONAL REGULATION
CONFIDENTIALITY ISSUES	

For information, contact:
Scott Hammer Michael Vittori
312.704.0550

wilsonelser.com

55 West Monroe Street
Chicago, IL 60603-5001

WILSON ELSER
WILSON ELSER MOSKOWITZ EDELMAN & DICKER LLP

Arrangements for Persons with Disabilities

The Illinois Psychological Association is committed to accessibility and non-discrimination in continuing education activities. Presenter and attendees are asked to be aware of the need for privacy and confidentiality during and after the program. Additionally, if a participant has special needs, she/he should contact Marsha Karey, (312) 372-7610, ext. 201, to discuss what accommodations can be provided by October 12, 2016. All questions, concerns, or complaints should be directed to Marsha Karey.

Exhibitor Information

The exhibits of the IPA convention represent a diverse range of ideas, techniques, and equipment. The use of these products should be guided by the APA ethical principles of psychologists. The IPA cannot assume responsibility for the products and services displayed.

Visit the Exhibit Booths
Thursday: 8:30 AM – 4:00 PM
Friday: 8:00 AM – 4:00 PM

The following are the exhibitors at the time of printing. Please extend your gratitude to these supporters of the Illinois Psychological Association by visiting their booths.

EXHIBITORS

ALTA MIRA—Bridges To Recovery
AMITA—Alexian Brothers Behavioral Health
ISPP—Argosy, Chicago and Schaumburg
Medication Induced Suicide Prevention
and Education Foundation
Pearson
Rose Hill Center
Psychology Specialist
The Trust
The Way Back Inn
Victories of The Heart NFP
Wexford Heath Sources
Wislon Elsner

There will be other exhibitors that are not listed in the program.

Sponsors

The Trust
Illinois Association on Problem Gambling (ICPG)
IPA Clinical Practice Section
IPA Graduate Student Section (IPAGS)
IPA Organizational & Business Consulting Section
IPA Sexual Orientation and Gender Identity Section

IPA Women's Issues Section
Midwestern University
Pretzel & Stouffer
TherapyNotes
Dan Weitzman CPA, LLC

Program Responsibility

There is no commercial support for this program, nor are there any relationships between the CE sponsor, presenting organization, presenter, program content, research, grants or other funding that could reasonably be construed as conflicts of interest.

Continuing Education Criteria

Continuing education credits are earned by way of a "one program hour to one CE credit" basis. For example, a symposium which meets for 1.5 hours is equal to 1.5 CE hours. A verification of attendance certificate will be awarded at the conclusion of each program. If you have any questions regarding the continuing education system, please inquire at the registration desk.

- The Illinois Psychological Association is approved by the American Psychological Association to sponsor continuing education for psychologists. The Illinois Psychological Association maintains responsibility for this program and its content.
- The Illinois Psychological Association is a Registered Social Worker Continuing Education Sponsor: License #: 159-001359.
- IPA sponsored APA CE credits satisfy the continuing education requirements of Illinois Licensed Clinical Professional Counselors.
- The IPA is an approved Professional Development Provider for the Illinois State Board of Education.

2016 Annual Convention Learning Objectives

The following learning objectives describe the knowledge and/or skills participants will acquire from each session.

FRIDAY, NOVEMBER 11, 2016

1. The Lies We Tell Ourselves: Ethical Pitfalls in Clinical Practice

- List 3 ways self-deception and self-serving bias operate in clinical situations
- List 3 common areas and issues where clinicians may be particularly vulnerable to self-deceptions and how this may place clients at risk for harm.
- Describe relevant clinical, ethical and legal considerations when self-deceptive scenarios arise.

2. Whole Health Psychotherapy for Medical Problems and Chronic Illness

- Following the guidelines of Lissa Rankin, M.D., participants are able to write self-healing plans for medical problems and chronic illness.
- Participants are able to list and explain and provide evidence-base for hardiness/resiliency, mindfulness, Positive Psychology, findings of Dean Ornish, MD and other therapies of use in writing and implementing self-healing plans.

3. Breaking the Cultural and Religious Barriers: Effectively Working with Muslim Clients

- Identify at least 3 factors that contribute to the underutilization of mental health services by Muslims.
- Identify key approaches that can help increase therapeutic alliance with Muslim clients.

4. Mapping the Terrain and Expanding the Field

- Participants will be able to identify 3 areas of healthcare reform that align with psychological practice opportunities.
- Participants will design a psychological intervention based on quality improvement and team-based care principles.

5. Transforming Healthcare: Opportunities for Making a Difference and Pivoting Your Career

- Attendees can list 3 aspects of the mechanics of working in areas of healthcare that may be atypical for psychologists.

- Attendees can list 3 approaches to non-traditional multidisciplinary, collaborative work in areas such as public-private partnerships in healthcare, global health and grant funded projects.

6. Neuropsychological Considerations of Major Adult Disorders

- Participants will be able to identify at least 2 components of neuropsychological profiles for various psychophysiological disorders (M.S., P.D., TBI, AD and Depression).
- Participants will be able to identify 2 symptoms related to the different adult disorders discussed (M.S., P.D., TBI, AD, and Depression).

7. Legislative Advocacy: Advances for Illinois Psychologists

- The attendee will be able to identify 2 issues present in proposed legislation, as well as legislation that is currently being implemented, on behalf of clinical psychologists.
- The attendee will be able to identify 2 ways to participate in grass roots advocacy, in unison with the legislative committee's outreach efforts.

8. How to Create a Safe Training Environment and Resolve Ethical Dilemmas Between Supervisors and Trainees

- Define supervision and list 2 aspects of supervision contracts, policies and procedures.
- List 3 ways to establish safety and intimacy in the supervisory relationship utilizing APA Benchmarks.
- List 2 supervision conflicts or ethical issues and how to resolve them.

9. The Cook County DUI Program: Secondary Addiction Prevention

- Participants will be able to identify 3 factors associated with addictive behavior regarding etiology, assessment and intervention.
- Participants will be able to identify 2 barriers to successful development and implementation of Intervention Programs within the Judicial System.

10. Healthcare Reform is Here and Evolving Every Day

- a. Identify 2 benefits and risks in the healthcare marketplace and be able to critique the benefits and risks to consumers and practitioners alike.
- b. List the effects of technology on the field of mental health practice.

11. Knowledge for Clinical Psychologist Regarding Public Schools and Special Education

- a. Describe and list how Response to Intervention and Positive Behavior Intervention Supports are used as part of the special education evaluation process in schools.
- b. Identify and list the requirements for a student to be found eligible for special education services and an IEP.

12. Could it be Adult ADHD? Recognition, Assessment and Treatment

- a. Describe 3 research-supported symptoms of adult ADHD that are not part of the DSM-V.
- b. Describe 4 psychotherapy behaviors that are suggestive of adult ADHD

13. Is Gray Divorce Different—Health Wise, Moneywise, Otherwise for those 50+

- a. List psychological, financial and other factors that affect the health and well-being of divorcing people over the age of 50.
- b. Identify and conduct multi-factor assessments and psychological therapy for this population in ways that promote optimal outcomes for health and well-being.

14. Prescriptive Authority: The Revolution in Healthcare Continues

- a. Participants will be able to list 2 salient components of the 2014 Illinois Prescriptive Authority Law as well as list two significant components of the Rules and Regulations of the 2014 Law, as currently drafted.
- b. Participants will be able to identify two ways that the 2014 Prescriptive Authority Law is being implemented, today, in Illinois.

15. Designing New Behavioral Care Under the Affordable Care Act

- a. Identify and list new behavioral healthcare models under the Affordable Care Act.
- b. Identify and list 2 challenges being faced in bringing these programs to the marketplace in light of multiple and at times, competing stakeholders.

16. The Art of Feedback

- a. How to admit mistakes and difficulties non-defensively as a core skill for students and for faculty/administrators.
- b. How to give and receive effective feedback both as a student and as a faculty member and trainer.

17. Women and Wellness during the Life Span: Hormonal Changes, Weight, Nutrition, and Self-Esteem Issues

- a. Participants will be able to identify 3 critical changes in physical development of women over a lifespan.
- b. Participants will be able to identify three ways in which hormones play a role on emotional functioning over the lifespan.

18. Developing Perinatal Behavioral Health Intensive Outpatient Program

- a. List 3 aspects of development of a 4-week treatment program tailored for the perinatal cohort.
- b. Describe 3 ways there is need for close collaboration with the health system and referral sources for success of patients in the perinatal IOP.

19. Implications of Using Behavioral Model to Treat Co-occurring Disorders

- a. List and compare current evidence-based treatments for co-occurring disorders.
- b. List 2 challenges in diagnosing co-occurring disorders, including substance misuse disorders and trauma.

20. The Psychology of Human Behavior

- a. Participants can define how to analyze a movie from a psychological perspective and identify psychological concepts and issues.
- b. Define how to identify the underlying dimensions of relationships such as secrets, ambiguities and power shifts that are found in both movies and in therapy.

21. Bridging the Gap Between Psychologists and Law Enforcement

- a. Identify 2 ways that mental health professionals (MHP) can assist law enforcement within critical incidents, debriefing, and crisis intervention teams.
- b. Describe how pre-event, event, and post-event traumatic events impact LEO and list 2 ways MHP can help assist in trauma recovery.
- c. Identify 2 recommendations from the International Chiefs of Police for critical incidents and MHP response.

22. Responding to the Opioid Epidemic: Psychologist Role on the Inter-professional Team

- a. Identify 2 risk factors for opioid misuse and/or overdose.
- b. List 2 psychological interventions for pain management.

23. Doctoral Emphasis in Military Clinical Psychology: Adler University Chicago

- a. Participants will be able to define the specialization of Military Psychology and identify 2 applications to clinical psychology.
- b. Participants will be able to list two components of the Psy.D. program's emphasis on Military Clinical Psychology.

24. Suburban Insanity: Factors Associated with Criminal Responsibility Decisions

- List 2 ways basic demographic factors effect criminal responsibility decisions in a suburban community.
- List 3 common factors discovered to effect criminal responsibility decisions in order to reduce the number of criminal offenses by the mentally disordered and how they affect deterrence.

25. The NIH Toolbox: A Useful Addition to Clinical Practice

- Define the role of modern psychometric test theory in the development of the NIH Toolbox and other recently developed Patient Reported Outcome measures.
- Describe the scope of the NIH Toolbox and list the types of measures included.

- List 2 advantages and 2 limitations of the NIH toolbox in clinical and research settings.

26. Integrating Neuroscience and Psychotherapy with Emerging Adults

- Identify and list brain development and maturational issues in emerging adulthood and their implications in regard to cognition, the emotions, executive functioning and attachment.
- Identify and list current neuro-diagnostic assessment approaches and neuro-modulation techniques.
- List 2 strategies for integrating neuro-science approaches to in-depth psychotherapeutic treatment.



**Continuum
of Care**

Within our Residential, Transitional, and Community Support programs, patients gain insights, learn to manage medications, and develop coping skills to regain and maintain psychiatric stability.



rosehillcenter.org
866.504.2259

Treatment. Growth. Recovery.



CONVENTION ATTENDEE SPECIAL SIGN UP FOR PROFESSIONAL PORTRAIT

AWARD WINNING PHOTOGRAPHER ALLAN LANDAU IS RETURNING TO THE IPA CONVENTION TO TAKE STUDIO QUALITY PORTRAITS SUITABLE FOR YOUR WEB SITES OR OTHER PROMOTIONAL OR PERSONAL USES AT A SPECIAL DISCOUNT TO MEMBERS OF THE IPA ATTENDING THE CONVENTION. INSTEAD OF OUR USUAL FEE OF \$350.00, MEMBERS OF THE IPA WILL PAY ONLY \$225.00 INCLUDING FULL RETOUCHING. PROOFS WILL BE EMAILED TO YOU AND WHEN YOU HAVE CHOSEN THE ONE YOU WANT TO USE, THE FINAL IMAGE WILL BE DIGITALLY ADJUSTED AND RETOUCHE. FILES IN THE SIZE(S) AND RESOLUTIONS APPROPRIATE FOR YOUR SPECIFIC USE(S) WILL BE DELIVERED. ROCHESTER INSTITUTE OF TECHNOLOGY GRADUATE, ALLAN LANDAU, HAS BEEN A COMMERCIAL PHOTOGRAPHER FOR OVER 30 YEARS. DURING HIS CAREER HE HAS WON NUMEROUS AWARDS THAT INCLUDE AN AWARD FOR EXCELLENCE IN THE PRESTIGIOUS PRINT MAGAZINE DESIGN ANNUAL AND FROM THE AMERICAN SOCIETY OF PRINT PROFESSIONALS AMONG OTHERS. HE SPECIALIZES IN PHOTOGRAPHING PROFESSIONALS AND PROFESSIONAL PRACTICES FOR ADVERTISING AND PROMOTION.

A HAIR AND MAKE-UP STYLIST CAN BE BOOKED FOR \$75.00 IF ENOUGH MEMBERS PRE-REGISTER FOR A PORTRAIT WITH HAIR & MAKE UP.

WHEN:

FRIDAY 9:00 AM TO 5:00 PM

SATURDAY: DEPENDANT ON DEMAND 9:00 AM TO 12:00 PM

COST:

\$225.00 INCLUDING FULL RETOUCHING

TO SCHEDULE AN APPOINTMENT, CONTACT:

ALLAN LANDAU

ALLAN@ALLANLANDAU.COM

312-451-2202

Thursday, November 10, 2016

7:30 AM - 4:00 PM

Registration

Lobby Foyer

7:30 AM - 9:00 AM

Breakfast sponsored by: **TherapyNotes**

8:30 AM - 4:00 PM

Exhibits

Three Oaks Ballroom Foyer

Full-Day Workshop: 9:00 AM - 4:30 PM

Ballroom A/B

Sponsored by: **IPA Clinical Practice**

6 Continuing Education Credits

WORRY, PANIC AND ANXIETY

David Carbonell, Ph.D. and Patrick McGrath, Ph.D.

PROGRAM DESCRIPTION:

This workshop will give attendees evidence based techniques for the treatment of anxiety disorders. These techniques will include Cognitive Behavioral Therapy (CBT) approaches, Exposure and Response Prevention (ERP) techniques and other methods that will elicit change. The workshop will also help attendees understand the diagnostic criteria for GAD, panic disorder, phobias, and OCD.

ABOUT THE PRESENTERS:

David Carbonell, Ph.D. is a clinical psychologist who specializes in the treatment of fears and phobias. In 1990, he founded one of the first group practices in the country that was solely dedicated to the treatment of these conditions and continues that work today. He is the author of "Panic Attacks Workbook" (2004) and "The Worry Trick" (2016), and the "Coach" at www.anxietycoach.com, a popular self-help web site for people recovering from anxiety disorders. He received his Ph.D. from DePaul University in 1985, and is licensed as a psychologist in Illinois and New York. Dr. Carbonell has conducted professional training in the treatment of anxiety disorders for more than 7000 therapists in the United States and abroad. He is also the founding member of The Therapy Players, an Improvisational comedy troupe of professional psychotherapists that performs at mental health conferences and other venues in and around Chicago.



Patrick B. McGrath, Ph.D. is the Clinical Director of the Center for Anxiety and Obsessive Compulsive Disorders at AMITA Health Behavioral Medicine Alexian Brothers Behavioral Health Hospital In Hoffman Estates, Illinois and the Executive Director of the Foglia Family Foundation Residential Treatment Center opening in spring of 2017. He is a member of the Scientific Advisory Board and the Conference Planning Committee of the International OCD Foundation (IOCDF), as well as the President of OCD Midwest, the official affiliate of IOCDF in the Midwest. He is the author of a stress management workbook called, "Don't Try Harder, Try Different," as well as, "The OCD Answer Book," and has been featured on radio and TV stations across the country, including National Public Radio and PBS. He was also featured on the Discovery Health Channel's Documentary "Anxious" and on three episodes of "Hoarding: Buried Alive" for The Learning Channel.



Learning Objectives:

1. Attendees can list 3 evidence based therapy techniques to treat anxiety disorders.
2. Attendees will be able to describe 2 reasons to their patients as to why CBT and ERP is used to treat anxiety.
3. Attendees can list two ways anxiety "tricks" your clients into getting stuck, and how to turn that around.
4. Attendees can list 3 ways to apply ERP techniques to worries as readily as to feared objects and activities.
5. Attendees can identify 2 effective change techniques in psychotherapy.
6. Attendees can list the diagnostic criteria for GAD, panic disorder, phobia and OCD.

Mid-Morning Break

Sponsored by: **Midwestern University**

12:00 PM - 1:00 PM

Buffet Lunch

LUNCH BUFFET

ASSORTED MARKET PLACE SANDWICHES

Assorted Gourmet Sandwiches, wraps and side salads. Served with vegetarian soup of the day, chips, lemon bars, and assorted brownies.

Afternoon Break

Sponsored by: **Illinois Council on Problem Gambling**

Friday, November 11, 2016

7:30 AM - 4:30 PM

Registration

Hotel Lobby

7:30 AM - 8:45 AM

Breakfast sponsored by: **TherapyNotes**

8:00 AM - 4:00 PM

Exhibits

Versailles Ballroom Foyer

10:00 AM - 12:00 PM

Student Poster Competition

Friday Morning Programing 1.5 and 3 Hour Sessions

8:30 AM - 11:45 PM

PROGRAM 1

THE LIES WE TELL OURSELVES: ETHICAL PITFALLS IN CLINICAL PRACTICE

Clinicians are vulnerable to self-deception and to self-serving biases. Such situations, when unrecognized, may lead to clinical, ethical and legal hazards. The IPA Ethics Committee will discuss the emotional and cognitive underpinnings of diverse scenarios where self-deception may occur with suggest guidelines for prudent practice.

Patricia Buckley, Ph.D.

Northwestern University

Paul Cantz, Psy.D., ABPP

Alder University

Scott D. Hammer, J.D.,

Wilson Elser Moskowitz Edelman & Dicker LLP

Ann Sauer, Ph.D.

Midwestern University

Member, IPA Ethics Committee

Abigail Sivan, Ph.D.

Northwestern University

Co-Chair, IPA Ethics Committee

Susan Zoline, Ph.D.

Illinois School of Professional Psychology

Co-Chair, IPA Ethics Committee

8:30 AM - 10:00 AM

PROGRAM 2

WHOLE HEALTH PSYCHOTHERAPY FOR MEDICAL PROBLEMS AND CHRONIC ILLNESS

Following guidelines of Lissa Rankin, psychotherapists, in collaboration with medical doctors, are consultants/support for their clients to write and carry out self-healing plans for recovery/healing. Strategies from hardiness/resiliency, mindfulness, Positive Psychology, and findings of Dean Ornish, MD, helps clients with medical problems and chronic illness.

Phillip L. Zediker, Ph.D.

Community Counseling Services and Associates

Carl Boyens, MA, LCPC

Becky Kalvelage, MS, CADC, Psy.D.

Philip Kirk, MA, LCPC, NCC

Community Counseling Services and Associates

8:30 AM - 10:00 AM

PROGRAM 3

BREAKING THE CULTURAL AND RELIGIOUS BARRIERS: EFFECTIVELY WORKING WITH MUSLIM CLIENTS

Muslim Americans have a system of values that sometimes create complications for them in preserving their own religious and cultural identity while attempting to integrate into the mainstream American culture. The goal of this symposium is to educate the attendees on how to effectively work with Muslim clients.

Fahad Khan, Psy.D., Chair

Khalid Center

Hooman Keshavarazi, MA, LCPC

Khalid Center

8:30 AM - 10:00 AM

PROGRAM 4

MAPPING THE TERRITORY, EXPANDING THE FIELD

With healthcare reform initiatives, primary care is ripe for clinical practice opportunities. Knowing the territory of primary care, aligning with healthcare agenda, and expanding into team-based care is fertile ground for psychological consultation. Examples of interventions skills, consultation roles and quality improvement management will be shared.

Mary Talen, Ph.D., Chair

Northwestern Family Medicine Residency Program

Friday CONTINUED

8:30 AM - 10:00 AM

PROGRAM 5

TRANSFORMING HEALTHCARE: OPPORTUNITIES FOR MAKING A DIFFERENCE AND PIVOTING YOUR CAREER

This workshop will deconstruct ways of building a portfolio career that is beneficial to others, as well as atypically stimulating and productive. Learn how to find opportunities to not only treat, but teach, manage, consult, write, podcast, blog-in public, private governmental, technology, and non-profit venues around the world.

Chirs E. Stout, Psy.D., Chair

Center for Global Initiatives; College of Medicine, UIC and ATI Holdings, LLC

10:00 AM - 10:15 AM

Mid-Morning Break

Sponsored by: **Pretzel & Stouffer and Midwestern University**

10:15 AM - 11:45 AM

PROGRAM 6

KNOWLEDGE FOR CLINICAL PSYCHOLOGIST REGARDING PUBLIC SCHOOLS AND SPECIAL EDUCATION

Presenters will discuss information necessary for clinical psychologist to be able to provide effective and ethical evaluations of school-related client concerns. Topics will include Response to Intervention, Positive Behavior Intervention Supports, 504 plans, special education/IEPs, and strategies for effective collaboration between clinical psychologist, families, and schools.

Anna Hickey, Ph.D., Chair

SIU School of Medicine, Department of Pediatrics

Leah Marks, Ph.D.

SIU School of Medicine & District 186 Schools

10:15 AM - 11:45 AM

PROGRAM 7

LEGISLATIVE ADVOCACY: ADVANCES FOR ILLINOIS PSYCHOLOGIST

Members of the IPA Legislative Committee will discuss federal and state bills that have become, or are in the process of becoming, law during the 2016-17 legislative year. An update on prescriptive authority, healthcare reform and reimbursement challenges/opportunities, advocacy opportunities for psychologists, and other legislative issues will be presented. IPA's lobbyists will discuss opportunities and challenges in Springfield.

Mary Talen, Ph.D. Session Co-Chairs

IPA Legislative Committee Co-Chairs

Kyle Bonesteel, Ph.D., Session Co-Chairs

IPA Legislative Committee Co-Chairs

Rebecca Gordon

Director of Membership and Communications

Lisa Grossman, J.D., Ph.D.

(PsyPact), Past President, IPA

Nneka Jones-Tapia, Psy.D.,

Executive Director, Cook County Jail

Terrence Koller, Ph.D., ABPP

IPA Legislative Liaison

Kevin Osten-Garner, Ph.D.,

IPA Chair, Healthcare Reimbursement Committee

Beth N. Rom-Rymer, Ph.D.

IPA Treasure and Past President

Chair Ad Hoc Committee on Prescriptive Authority

Steven Rothke, Ph.D.,

(Probate), Chair, By-Laws Committee

Joe Troiani, Ph.D.,

IPA President

IPA Attorneys and Lobbyists

Jennifer Morrison, J.D.

Michael Sheehan, J.D.

Mark Taylor, J.D.

Ryan Taylor, J.D.

Rob Uhe, J.D.

12:00 PM - 1:15 PM

IPA Annual Awards Luncheon

Sponsored by:

American Psychological Association Insurance Trust (APAIT)

President's Address

Joseph Troiani, Ph.D.

AWARDS

- Distinguished Illinois Psychologist
Karla Steingraber, Psy.D
- IPA Distinguished Service Award for Clinical Scholarship
Sponsored by: **IPA Academic Section**
Neil Pilskin, Ph.D.
- Presidential Recognition Awards (?)
- Legislative Awards
- IPAGS Jennifer Manfre Award
- Student Poster Awards
- Psychologically Healthy Workplace Award
- Other Awards may be added

Friday CONTINUED**FRIDAY LUNCH MENU****MIXED FIELD GREENS:**

Crisp field lettuce with cucumbers, grape tomatoes, sliced red onions, shaved carrots and your choice dressing.

CHICKEN PROVENCAL:

Boneless breast of chicken sautéed with stewed tomatoes, peppers, wine, capers, shallots and fresh basil, with roasted seasonal vegetables and rosemary & garlic roasted red bliss potatoes. Served with rolls and butter.

VEGETARIAN CHOICE

Vegetable Strudel: Seasonal vegetables are sautéed with herbs, sprinkled with feta cheese, folded into puffed pastry with chardonnay beurre blanc.

DESSERT ASSORTED:

Lemon Pound Cake with Berries

Coffee, tea, decaffeinated coffee and iced tea service

1:30 PM - 4:45 PM**PROGRAM 8****HOW TO CREATE A SAFE TRAINING ENVIRONMENT AND RESOLVE ETHICAL DILEMMAS BETWEEN SUPERVISORS & TRAINERS**

This three hour didactic and workshop will cover the training relationships both from a student and supervisory perspective. Instruction and topics on how to foster and create a safe environment for all parties. It will include instruction of proper documentation as well as ethical cases in resolving dilemmas between the students, supervisors and third parties such as schools, sites, accreditation bodies and students.

Dr. Gregory Sarlo, Psy.D., Chair
IPA Internship Consortium

Dr. Daniel Brewer, Psy.D.
IPA Internship Consortium

Dr. Shelby Mailho, Psy.D.
IPA Internship Consortium

1:30 PM - 3:00 PM**PROGRAM 9****THE COOK COUNTY DUI PROGRAM: SECONDARY ADDICTION PREVENTION**

This symposium will present a description of the Cook County D.U.I. program, as an example of secondary addiction prevention. This program is the largest of its kind which has served between 10-15 thousand clients a year

for the past 40+ years. The program includes assessment and referrals for intervention and also has a follow-up monitoring component.

Vincent D. Pisani, Ph.D., Chair
Behavior Consultant International

Kevin J. Doyle
*Department Director C.S.I. / D.U.I. Program Administrator
Catholic Charities of the Archdiocese*

Rocco S. Caponigri
C.S.I.

John T. Fry
Central States Institute of Addiction

1:30 PM - 3:00 PM**PROGRAM 10****HEALTHCARE REFORM IS HERE AND EVOLVING EVERY DAY**

Since the Affordable Care Act was signed into law, the healthcare marketplace has been evolving to meet the goal of providing quality care at lower cost. From insurance benefits and regulations to healthcare structures and payment reform, there is no shortage of change happening on a daily basis. The presentation will provide an overview of the changes in the healthcare landscape since the bill's signing with a particular emphasis on the mental health field. In addition, participants will learn about the expanding role of technology including web-based treatment, telehealth, and mental health delivery through texting.

Kevin A. Osten-Garner Psy.D.,
*Associate Vice-President of Academic Affairs;
Division of Community Engagement and Training
Executive Director; Adler Community Health Services*

1:30 PM - 3:00 PM**PROGRAM 11****NEUROPSYCHOLOGICAL CONSIDERATIONS OF MAJOR ADULT DISORDERS: A REVIEW OF: MULTIPLE SCLEROSIS, PARKINSON, TRAUMATIC BRAIN INJURY, ALZHEIMER'S DISEASE, AND DEPRESSION.**

Sponsored by Illinois Psychological Association Graduate Student Section (IPAGS)

This program focuses on the discussion of various medical and psychological disorders from a neuropsychological perspective. The conditions reviewed include Multiple Sclerosis, Parkinson's disease, Traumatic Brain Injury, Alzheimer's disease, and Depression. Aspects such as epidemiology, disorder description, common symptoms, differential diagnosis, neuropsychological profile, demographic differences, potential treatment, barriers to treatments, and future directions will be reviewed.

Friday CONTINUED

Moderated by Aimee Cruz M.A.,
Chair of the Illinois Psychological Association of Graduate Students (IPAGS) and doctoral student Midwestern University

Dalia S. Manjarres Cohen B.A.

Alyssa Fredrick

Divya Jain, M.Sc.

Ewelina Lakomy

Rebecca Sewell

3:00 PM - 3:15 PM

Mid-Afternoon Break

Sponsored by: **Daniel Weitzman, CPA, JD, LLC**

3:15 PM - 4:45 PM

PROGRAM 12

COULD IT BE ADULT ADHD? RECOGNITION, ASSESSMENT AND TREATMENT

About two-thirds of childhood ADHD continues to adulthood. One out of ten psychotherapy clients probably has ADHD, and therapy that does not address ADHD may be ineffective.

Outline:

- Updated symptoms based on research
- Recognizing adult ADHD
- Assessing adult ADHD
- CBT for adult ADHD
- Comorbid conditions and alternative treatments

Jan Willer, Ph.D.,
Private Practice

3:15 PM - 4:45 PM

PROGRAM 13

IS GRAY DIVORCE DIFFERENT HEALTHWISE, MONEYWISE, OTHERWISE FOR THOSE 50+?

Divorce among those 50+ has doubled since 1990. Threats to health and psychology well-being of those who divorce after 50+ include financial, social and emotional independence/dependence. Psychologists can improve outcomes by integrating knowledge and skills specific to the needs of these clients into assessment, psychotherapy, collaboration and referral.

Carroll Cradock Ph.D., Chair
Private Practice

Linda O'Connell, Ph.D.
Private Practice

Nicole Romito, CFP, CDFIA
Private Practice

Mary Rooney, MA

3:15 PM - 4:45 PM

PROGRAM 14

PRESCRIPTIVE AUTHORITY: THE REVOLUTION IN HEALTHCARE CONTINUES

Dr. Rom-Rymer will describe the dramatic history of the passage of the 2014 Illinois Prescriptive Authority Law and will demonstrate, through vignettes, how this law creates revolutionary change in the healthcare environment in Illinois and throughout the country. Two hundred folks are training to become Illinois prescribing psychologists. Excitement abounds!

Beth N. Rom-Rymer, Ph.D., Chair
IPA Treasurer
IPA Past President

3:15 PM - 4:45 PM

PROGRAM 15

DESIGNING NEW BEHAVIORAL CARE UNDER THE AFFORDABLE CARE ACT

We will highlight the experience of Behavioral Care Management (BCM) in creating new behavioral care opportunities under the Affordable Care Act. Both seen and unforeseen challenges will be discussed. Dealing with the multiple and at times, competing stakeholders has made for an interesting 'journey'. Our predictions will be articulated about the future of behavioral care and we are encouraging a healthy and vibrant discussion with attendees.

Keith Baird, Ph.D., ABPP
Behavioral Care Management

3:15 PM - 4:45 PM

PROGRAM 16

FEEDBACK: GIVING AND RECEIVING, THE GOOD, BAD AND THE JUST UGLY

This symposium will include two senior administrators and trainers and three doctoral graduate students. Techniques of giving and receiving feedback in ways which can be received and integrated into self-awareness and performance will be discussed from both perspectives. Also discussed will be negative and even destructive methods of giving feedback.

Karen Farrell, Psy.D., ABPP., Chair
Midwestern University

Ann Sauer, Ph.D.
Midwestern University

Sean Serluco, M.A., Intern; Hannah Hauseman, M.A., Advanced Practicum Student, Illinois State University; Sarah Hecht, M.A., Therapy Practicum Student, ABS

Friday CONTINUED**5:00 PM - 6:00 PM****Town Hall Meeting: Reduce Violence and Help Build Safer Communities**

At the June 2016 Council meeting a Task Force on Violence was established resulting from the recent increase in violence in our Country and around the World. Dr. Lisa Page was selected to chair the task force, and with her committee identified the purpose of the Task Force is: to determine how Psychologists can help reduce violence and work with our community leaders to reduce violence and help create safer communities.

There are many issues related to violence including discrimination, hate crimes, mental illness, and the use of assault weapons to name a few. Therefore the Task Force has somewhat narrowed its' focus to include: (1) Help the public manage the stress of various types of violence; (2) Help prevent violence through the coordination of services with community organizations and providing appropriate resources; and (3) To support providers who are serving those who are victims of violence.

In the month following the establishment of the Task Force on Violence and in order to be effective and sensitive to the diverse issues involved, The President of IPA made a motion along with some of the members of the Executive Committee to "recommend adding members and external consultants to the Task Force because a larger group is needed to fully address the complexity of the issues around societal violence and to represent the issues, populations, and communities affected."

So please join us for a Town Hall meeting with Dr.'s (IPA President) Joe Troliani, Lisa Page, and Bruce Bonecutter and a discussion panel of community members who we are working with to learn more about the Illinois Psychological Association's Task Force on Violence and how Psychologists can help build safer communities and support those who have been affected by violence.

6:00 PM - 7:45 PM**President's Reception***Flower Room*

Heavy Hors d'oeuvres, Wines From Around the World, presented by Sommelier Edwin Badgett III and a performance by the Therapy Players

Saturday, November 12, 2016**7:30 AM - 1:00 PM****Registration***Hotel Lobby***8:00 AM****Coffee and Bakery Breakfast***Sponsored by: TherapyNotes***8:00 AM - 8:50 AM****All Association Meeting****9:00 AM - 10:30 AM****PROGRAM 17****WOMEN AND WELLNESS DURING THE LIFE SPAN: HORMONAL CHANGES, WEIGHT, NUTRITION, AND SELF-ESTEEM ISSUES**

Women experience hormonal changes over the lifespan resulting in body image changes and balancing of hormones and nutritional needs. This symposium will address the above by a Wellness Specialist, Dr. Virginia Thomas who has expertise in female hormonal changes, weight changes, and nutritional demands.

Kaylani Gopal, Ph.D., HSPP Chair*IPA Women's Issues Section Chair***Virginia Thomas, MD***Private Practice***9:00 AM - 10:30AM****PROGRAM 18****DEVELOPING A PERINATAL BEHAVIORAL HEALTH INTENSIVE OUTPATIENT PROGRAM**

A detailed presentation of the development of the AMITA Perinatal IOP from "Idea to 1st day", as well as day-to-day operations, curriculum development, PMAD CLS, inclusion of L&D nursing staff and psychopharmacology management, including a brief description of the clinical presentations and outcomes of program after one year of operation.

Kimberly McCue Ph.D., Chair*Alexian Brothers Behavioral Health Hospital***Lisa Simanls, MSW, LCSW***Alexian Brothers Behavioral Health Hospital***Melissa Gonski, LCPC***Alexian Brothers Behavioral Health Hospital***Celelia Horan, Psy.D.***Alexian Brothers Behavioral Health Hospital*

Saturday CONTINUED**9:00 AM - 10:30 AM****PROGRAM 19****IMPLICATIONS OF USING A BEHAVIORAL MODEL TO TREAT CO-OCCURRING DISORDERS**

This program presents an overview and discussion of current challenges in treating co-occurring disorders. These include challenges in diagnosis, use of group or individual therapy and choosing appropriate evidence based therapies. Cultural considerations in using these therapies will be explored as well.

Catherine McNeilly, Psy.D., CADC., Chair
Associate Professor, Adler University

Alexandra Chadderdon, M.A.
Advanced Practicum Student, Advocate Christ Medical Center

9:00 AM - 10:30 AM**PROGRAM 20****MOVIES: THE PSYCHOLOGY OF HUMAN BEHAVIOR**

Movies are designed multi-dimensionally including portrayals of human behavior. In analyzing the writer and director's presentation we can better understand the depth of relationships and psychology struggles. An analysis of the movie "Whiplash" will be explored to illustrate dynamics and issues in the process of psychotherapy.

Stanley Selinger Ph.D., Chair
The Family Institute at Northwestern University

Ricard Adler, J.D.
Attorney at Law

10:30 AM - 10:45 AM**Mid-Morning Break**

Sponsored by: **IPA SOGI Section**

10:45 AM - 12:15 PM**PROGRAM 21****BRIDGING THE GAP BETWEEN PSYCHOLOGIST AND LAW ENFORCEMENT**

Bridging the gap between law enforcement and mental health professionals: This presentation will discuss the ways mental health professional can be utilized within law enforcement such as debriefing, psychoeducation about critical incidents, mental health training, peer support/EAP's, involuntary hospitalizations, etc. Mental Health Professionals will also learn how to help law enforcement

agencies understand, develop, and/or change their existing response to critical incidents to support first responders. Providers should understand the use of police department's Crisis Intervention Teams and how these teams can proactively help clients who have the potential for a mental health crisis and/or an involuntary hospitalization. Mental Health Professionals will also understand law enforcement culture so they are more aware of making practical, applicable recommendations and work with law enforcement.

Carrier Steiner, Psy.D., Chair
Director of Clinical Training, Midwestern University

10:45 AM - 12:15 PM**PROGRAM 22****RESPONDING TO THE OPIOID EPIDEMIC: PSYCHOLOGISTS ROLE ON THE INTER-PROFESSIONAL TEAM**

Opioid prescriptions for pain reduction have increased significantly over the past two decades, resulting in growing misuse, addiction, overdose and death. Psychologist can play a critical role in addressing this opioid epidemic by promoting the use of psychological interventions in assessing risk, treating pain, and addressing addiction.

Cheryl L Metja, Ph.D., Chair
Governors State University

Serena Wadhwa, Psy.D., LCPC
Governors State University

Nancy Burley, abd Ed.D.
Governors State University

10:45 AM - 12:15 PM**PROGRAM 23****DOCTORAL EMPHASIS IN MILITARY CLINICAL PSYCHOLOGY: ADLER UNIVERSITY**

In 2011, Founder, Dr. Joseph Troiani's (IPA President) launched his vision of the nation's first non-governmental Doctoral Emphasis in Military Clinical Psychology embedded in the Psy.D. Program at Adler University. He partnered with Coordinator, Dr. Grady Osten-Gradner, to develop its present day curriculum, practices and community engagement. This presentation will be a walk-through of its conception, implementation, its challenges and its success.

Grady Osten-Garner, Ph.D.,
(Chair or Sponsored by Joe)
Officer, USAR Retired
Associate Professor & Coordinator, Doctoral Emphasis in Military Clinical Psychology
Doctor of Psychology in Clinical Psychology (Psy.D.) Program
Founder, Adler Consortium for Military Psychology Research (CMPR)

Saturday CONTINUED**10:45 AM - 12:15 PM****PROGRAM 24****SUBURBAN INSANITY: FACTORS ASSOCIATED WITH CRIMINAL RESPONSIBILITY DECISIONS**

This study aimed to determine how basic demographic factors effect suburban criminal responsibility decisions. Number of cases were coded based on common demographic factors, including: age, race, crime and psychiatric diagnosis. The factors were analyzed to determine how each and their interaction, contribution to a criminal responsibility decision.

John Murray, Psy.D., Chair

Diagnostic Services: Probation and Court Services, 18th Judicial Circuit Court

9:00 AM - 12:15 PM**PROGRAM 25****THE NIH TOOLBOX: A USEFUL ADDITION TO CLINICAL PRACTICE**

This presentation details the NIH Toolbox for the Assessment of Neurological Behavior & Function, a multidimensional set of brief, royalty-free measures. Now these measures are available on iPads and thus provide practitioners with a valid and easy way to assess the effectiveness of therapy and validity of patient concerns.

Abigail B. Sivan, Ph.D., Chair

Northwestern University

Cindy Nowinski, MD, Ph.D.

Northwestern University

Jerry Slotkin, Ph.D.

University of Delaware

9:00 AM - 12:15 PM**PROGRAM 26****INTEGRATING NEUROSCIENCE AND PSYCHOTHERAPY WITH EMERGING ADULTS**

Contemporary work in neuroscience and psychotherapy recognizes that these domains are intimately interwoven. An understanding of neurological maturation process can help guide and direct treatment strategies, as implemented in individual, group and family psychotherapies and direct neuro-modulatory approaches. Case materials will be presented and audience participation will be encouraged.

David Daskovsky, Ph.D., Chair

Senior Psychologist/Director of Training, Yellowbrook

Bryn Jessup, Ph.D.,

Director of Family Services, Yellowbrook

Marc Sandrolini, MD.

Staff Psychiatrist, Yellowbrook

David Baron, MD,

Medical Director, Yellowbrook

SEEKING PSYCHOLOGISTS**CLINICAL, NEURO, CHILD/ADOLESCENT, HEALTH**

Bloomington, Canton, Champaign, Chicago, Decatur, Effingham, Olney, Pekin, Peoria, Pontiac

Psychology Specialists is a growing multi-site practice in Illinois helping hard-working, highly respected, dynamic providers find work-life balance. Leave the non-clinical tasks in the hands of our administrative team which coordinates all psychological testing materials, scheduling, billing, compliance programs, technological support, and facilities maintenance. We offer a **competitive salary and full benefits package** including: relocation assistance; health, dental and vision insurance; short-term and long-term disability insurance; Simple IRA retirement plan; and, a continuing education allowance.

Come see us at our booth at the IPA Convention

Contact Angela at 888.706.3190 ext. 115 or Angela@PsychologySpecialists.com



**PSYCHOLOGY
SPECIALISTS**

www.psychologyspecialists.com





**A national center of excellence
specializing in the treatment of emerging adults
(ages 17-30's) and their families.**

Yellowbrick addresses the complex needs of troubled emerging adults with full time, experienced and compassionate professionals dedicated to accountability and outcome.

Clinical Issues: Across a spectrum of diagnoses and syndrome patterns of dysfunction, all of the young people coming to Yellowbrick share the common difficulty in negotiating the universal challenges of transition to adulthood.

Program Model: Yellowbrick's "real time treatment" model targets these developmental processes with interventions informed by an integration of:

- Neuroscience research
- Developmental psychology
- Cognitive, skills-based, experiential and in-depth psychotherapies
- Strength-based rehabilitation and wellness approaches
- Sober peer community within a naturalistic "real time" setting

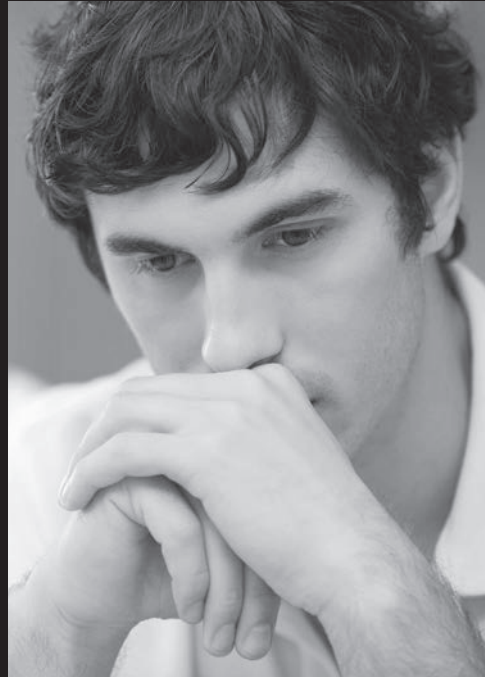
Following assessment of individual capabilities and vulnerabilities, Yellowbrick prescribes a personalized life plan combining sober supported apartments, professional services and counseling for return to school and/or work.

"Yellowbrick employs a unique paradigm-changing model that creates a powerful opportunity for the diagnostically elusive and difficult to treat young adult."

-Allan Schore PhD;

Faculty, UCLA David Geffen School of Medicine;
Editor, Norton Series on Interpersonal Neurobiology

Visit www.yellowbrickprogram.com or call 847 869-1500 x233



Convention Location and Hotel Information

THURSDAY THROUGH SATURDAY

The Drake Oakbrook Hotel

2301 York Road
Oakbrook, IL 60523
630-571-0000

HOTEL RESERVATIONS

The special group rate at the Drake Oakbrook Hotel for the IPA is \$149 per night.

- Reservations for the convention must be made by the individual directly with Drake Oakbrook Hotel by calling 630-571-0000. **Individuals making reservations must mention they are requesting the group rate for Illinois Psychological Association**
- To receive the IPA group rate, reservations must be made no later than **October 17, 2016**

- Reservations made after October 18, 2016 will be subject to prevailing rates and accepted on a space available basis.
- All reservations must be accompanied by a first night room deposit or guaranteed with a major credit card. The hotel will not hold any reservations unless secured by one of the above methods.
- Check in time is 3:00 PM and check out time is Noon.

DIRECTIONS

Directions to the hotel can be found at www.thedrakeoakbrookhotel.com/location.htm

PARKING

There is complimentary onsite parking at the hotel.

17

"Please Make Your Hotel Reservations Early."

Pretzel & Stouffer | Since 1946
CHARTERED

Your reputation
is our business.

For nearly 70 years, the lawyers of PRETZEL & STOUFFER, Chartered have successfully defended the reputations of medical professionals throughout the state. When your professional reputation is at risk, either through a lawsuit or a board action, choose an experienced team that makes your reputation their business.

For more information, contact:
Stephen C. Veltman (312) 578-7528
sveltman@pretzelstouffer.com

Registration Information

PRE-REGISTRATION DEADLINE:

October 28, 2016 at 4:00 PM.

All attendees and presenters must register at the IPA Registration Area. Please pick up name badges at the Registration Desk. Name badges must be worn at all times for security purposes.

REGISTRATION TIMES:

Thursday, November 10, 2016
7:30 AM - 4:30 PM

Friday, November 11, 2016
7:30 AM - 5:30 PM

Saturday, November 12, 2016
7:30 AM - 11:00 AM

METHOD OF PAYMENT:

You may pay by cash, check, money order, municipal, county, or state vouchers, or by VISA, Mastercard or American Express. IPA FEIN # 36-6109267.

REFUND POLICY:

Written cancellations must be postmarked by October 28, 2016 in order to receive a refund. There will be a \$35.00 cancellation fee. No refunds will be given for non-attendance or cancellation after October 28, 2014.

18

To register online go to:
www.illinoispsychology.org

Illinois Psychological Association Annual Convention

November 10, 11 and 12, 2016

Registration Receipt

Date Paid _____

Amount Paid _____

Method of Payment

Check #: _____ Master Card Visa

Please Note:

You will not receive confirmation of registration before the conference. However, if there is a discrepancy when you arrive for the program, someone will be available to ensure you are able to attend and that the discrepancy is resolved.

Thank you for helping us keep our costs down by not requiring a confirmation of registration.

SAVE THIS AS YOUR RECORD OF PAYMENT.

2016 CONVENTION REGISTRATION FORM

Transformation of Healthcare: Challenges for the Private and Public Sector

November 10, 11 & 12, 2016

(You may copy this form) Please print the following information

Name: _____ Highest Degree: _____

Organization/Affiliation: _____

Address: _____ Phone: _____

City: _____ State: _____ Zip Code: _____

Email Address _____

CIRCLE REGISTRATION CHOICES

	REGISTRATION RECEIVED BY October 28, 2016	REGISTRATION ON SITE OR AFTER October 28, 2016
THURSDAY, FRIDAY AND SATURDAY PROGRAMS		
IPA Members or Affiliates	\$395	\$445
IPA Student Members:	\$165	\$185
Non-Members	\$450	\$545
THURSDAY WORKSHOP ONLY (includes lunch)		
IPA Members or Affiliates	\$175	\$200
IPA Student Members:	\$75	\$100
Non-members	\$195	\$225
FRIDAY PROGRAMS ONLY (includes lunch)		
IPA Members or Affiliates	\$175	\$200
IPA Student Members: (no lunch/lunch included)	\$50/\$75	\$75/\$100
Non-members	\$195	\$225
SATURDAY PROGRAMS ONLY		
IPA Members or Affiliates	\$ 90	\$115
IPA Student Members	\$35	\$50
Non-Members	\$110	\$140

TOTAL CONFERENCE FEES _____

I prefer a vegetarian lunch on Friday I am a new IPA member (joined after 1/1/2016)

VISA/MASTER CARD # _____ Expiration Date: _____

Signature: _____

YOUR PROGRAM CHOICES: Check the number of each program you plan to attend on Friday and Saturday. This information will help determine meeting room size. Refer to program numbers listed with program titles.

FRIDAY: A.M. 1 2 3 4 5 6 7
 FRIDAY: P.M. 8 9 10 11 12 13 14 15 16 Town Hall Meeting
 SATURDAY: A.M. 17 18 19 20 21 22 23 24 25 26

Make check or voucher payable to: **Illinois Psychological Association Convention** and mail with this form to:
 Illinois Psychological Association, 67 East Madison Street, Suite 1817, Chicago, Illinois 60603
 Phone: 312/372-7610 Fax: 312/372-6787



Detach this page. Complete the registration form on the other side and mail or fax it to the

**Illinois Psychological Association
67 East Madison Street, Suite 1817
Chicago, Illinois 60603**

Fax: (312) 372-6787

**Complete the box on page 18.
That and/or your cancelled check
will serve as a receipt of your
registration for the Convention.
No other confirmation will be mailed.**

To register online go to: www.illinoispsychology.org





Illinois Psychological Association **2016-2017**
Membership Application

IPA FISCAL YEAR RUNS JULY 1, 2016 – JUNE 30, 2017

JOIN ONLINE AT: www.illinoispsychology.org

APPLICANT INFORMATION

Name _____ Highest Degree _____ Year Granted _____ School _____

Please complete both work and home addresses. Check a box for your preferred mailing address.

Work _____
 Independent Practice or Employment Setting

Street _____ City _____ State _____ Zip _____

(_____) _____ (_____) _____
 Business Phone Business Fax

Title _____ Nature of Business _____

Home _____
 Street _____ City _____ State _____ Zip _____

(_____) _____ (_____) _____ _____
 Home Phone Home Fax Email

Type of Membership (Please check one of the following)

- Full Membership–Licensed:** Must be currently licensed in the state of Illinois License #: _____ Year Licensed _____
- Full Membership–Not Licensed:** Applicant has a doctoral degree in psychology but is not a licensed psychologist. Applicant must meet the following requirement. Earned a doctoral degree in psychology from a program accredited by the Council of Post Secondary Accreditation or accredited by the American Psychological Association.
- Student Member:** Applicant is a full-time tuition paying student who is majoring in psychology or an intern/resident in psychology.

 Name of School

- Affiliate Member:** Applicants have an interest in psychology such as but not limited to certified paraprofessionals, high school teachers and members of the general public. Affiliate Members are considered non-voting members of the Association. Affiliate Members may serve as members of committees of the Association and participate in programs and discussions of issues.
- Out-of-State Member:** Applicant is a former member who has relocated to another state or a psychologist or psychology graduate student from another state who wished to be affiliated with the Association.

Optional: Ethnicity Category

- Asian African American Caucasian Hispanic Native American

PLEASE READ AND SIGN

In making this application, I agree to be bound by the Ethical Principles of Psychologists and the Code of Conduct of the American Psychological Association. I affirm that the statements made in this application correctly represent my qualifications for membership and understand that if they do not, my membership may be voided. I understand that my membership in IPA does not certify my competence in any area of psychology. I will not use my membership in IPA as an indication of my competence in any representation to the public.

Membership may be denied to an applicant for cause, which includes but is not limited to disciplinary action for ethical reasons by the American Psychological Association, disciplinary action by any Psychology Licensing Board (including but not limited to censure, suspension, revocation or denial of licensure), misrepresentation of qualifications to the public or the Association, or any cause that constitutes grounds for disciplinary action by the Illinois Clinical Psychologists' Licensing and Disciplinary Board.

Signature: _____ Date: _____

JOIN NOW AND YOU WON'T HAVE TO RENEW UNTIL JULY 1, 2017

Step 1: MEMBERSHIP TYPE (See Page 1 for Membership Type definitions)	Dues:
Licensed (<i>IPA Dues are discounted for first two years of membership</i>)	
• First year as an IPA member:	\$130 (Licensed Applicants pay this amount)
• Second Year:	\$195
• Third Year and Beyond:	\$235
<i>Other</i>	
Non-Licensed Doctoral	\$70
Affiliate	\$75
Out-of-State	\$25
Student	\$40 (Includes membership in IPAGS)

Step 1: DUES TOTAL: \$ _____

Step 2: SECTION MEMBERSHIP—Optional (See www.illinoispsychology.org for Section Descriptions)

Check choices

<input type="checkbox"/> Academic	\$10	
<input type="checkbox"/> Clinical Practice	\$30	
<input type="checkbox"/> Consulting	\$25	
<input type="checkbox"/> Early Career Psychologists (first seven years out of grad school)	\$10	
<input type="checkbox"/> Graduate Students (IPAGS)	\$25	(included with Grad Student Membership)
<input type="checkbox"/> Health and Rehabilitation	\$10	
<input type="checkbox"/> Military Psychology	\$10	
<input type="checkbox"/> Sexual Orientation Issues	\$15	
<input type="checkbox"/> Social Responsibility	\$10	
<input type="checkbox"/> Women's Issues	\$10	

Step 2: SECTION MEMBERSHIP TOTAL: \$ _____

Step 3a: MANDATORY \$60.00 LEGISLATIVE ASSESSMENT FEE FOR LICENSED MEMBERS ONLY

3b: MANDATORY SUPPLEMENTAL LEGISLATIVE ASSESSMENT FEE FOR LICENSED MEMBERS ONLY

If your annual net income is:	\$30,000 - \$50,000	\$80
	\$50,001 - \$80,000	\$130
	\$80,001 - \$110,000	\$170
	Over \$110,000	\$200

Step 3: Total (Step 3a + 3b) Legislative Assessment Fee: \$60 + \$ _____ **= \$** _____

Explanation of the Licensed Psychologist Legislative Assessment Fee: The base Legislative Assessment is \$60.00 for all licensed psychologist. The Supplemental Legislative Assessment is based on your income. These assessments are designated exclusively for IPA Legislative and Advocacy activities. The IPA continually defends the rights of psychologists to continue to provide the services for which they are trained. The IPA also monitors activities and advocates for legislation that has an impact on the consumers we serve, consumers who are not organized to protect themselves. A legislative assessment is charged to all psychologists with the rationale that even those psychologists who see only a few patients a week do so because the IPA works to protect that right.

Step 4: Add: Step 1 Total \$ _____
 Step 2 Total \$ _____
 Step 3 Total \$ _____ = **TOTAL DUE: \$**

Payment Method: Enclosed is a check for \$ _____

Or charge the above total to my: Visa MasterCard Card Billing Address: Home Business

Card Number _____ Exp Date _____

Signature _____

Please complete this application form and mail/fax it to:
 Illinois Psychological Association
 67 East Madison Street, Suite 1817
 Chicago, IL 60603
 Fax: 312/372-6787

For Assistance Call: 312-372-7610 x201

The Illinois Psychological Association Works for You

- ✓ IPA is one of the top State Associations in gaining broad legislative recognition for the practice of psychology.
- ✓ IPA speaks for psychology by advocating for the proper care and treatment of those with mental disorders.
- ✓ IPA's Regional Representatives to IPA Council assure input in policy development and implementation from all areas of Illinois.
- ✓ IPA is the only Illinois psychology organization affiliated with the American Psychological Association.
- ✓ IPA has ten special interest sections including a brand new Early Career Psychologist Section.
- ✓ IPA promotes participation of graduate students and interns in professional psychology activities at the State level.
- ✓ IPA provides liaison for academic psychologists to facilitate promotion of dialogue on issues of student education and training in psychology.

Membership Benefits and Services

Practice Assistance Professional Representation

- ✓ Employment information
- ✓ State and federal legislative bodies
- ✓ Client referral service
- ✓ State governmental agencies
- ✓ Speakers bureau
- ✓ Community agencies
- ✓ Third party payment assistance
- ✓ Administrative rules

Continuing Education

- ✓ Annual Convention
- ✓ Consultation on ethical issues
- ✓ CE courses and workshops
- ✓ Workshops on ethics
- ✓ Section seminars and workshops
- ✓ And much, much more

Special Interest Sections

Academic Section

Clinical Practice Section

Early Career Psychologist Section (ECP)

Health and Rehabilitation Section

IPA Graduate Student Section (IPAGS)

Military Psychology Section

Organizational and Business Consulting Psychology Section

Sexual Orientation and Gender Identity Section

Social Responsibility Section

Women's Issues Section

IPA WEB PAGE www.illinoispsychology.org

IPA Convention Volunteers and Staff

IPA Executive Committee

Joseph Troiani, Ph.D., President
Karla Steingraber, Psy.D., Immediate Past-President
Laura Faynor-Ciha, Ph.D., President-Elect
Cristina Cox, Ph.D., Secretary
Beth N. Rom-Rymer, Ph.D., Treasurer
Clifton Saper, Ph.D., APA Council Representative

IPA Council

Alice Bernstein, Ph.D., Metropolitan Regional Representative
Christopher Bibby, Psy.D., Social Responsibility Section
Jeremy Bidwell, Ph.D., North Regional Representative
Daniel Brewer, Psy.D., Chair, Sexual Orientation and Gender Identity Section
Aimee Cruz, Chair, IPAGS
Algean Garner, Psy.D., Health and Rehabilitation Section Chair
Kalyani Gopal, Ph.D., Chair, Women's Issues Section
Michael Ilovsky, Ph.D., North Central Regional Representative
Elva Johnson-Pompa, Psy.D., Chair, Military Psychology Section
Jeffrey Kellogg, Psy.D., South Central Regional Representative
Lisa Lombard, Ph.D., Chair, Clinical Practice Section
Ammara Khalid, Psy.D., Chair, Early Career Psychologists
Lisa Page, Psy.D., ABPP, Chair, Organizational & Business Consulting Psychology Section
Mark Reinecke, Ph.D., ABPP, Chair, Academic Section
Vida Dyson, Ph.D., Metropolitan Regional Representative
Gregory Sarlo, Psy.D. Metropolitan Regional Representative
Michelle Womontree, Psy.D., South Central Regional Representative

Volunteer Coordinator

Linda Wright, Psy.D.

Continuing Education Committee

Kimberly Lemke, Psy.D., Chair

IPA Membership Committee

Alexander Paret, Ph.D.

IPA Convention Committee

Joseph Troiani, Ph.D., Chair
Laura Faynor-Ciha, Ph.D.
Kim Lemke, Psy.D.

IPA Staff

Marsha Karey, Executive Director
Rebecca Gordon, Director of Membership and Communications
Terrence Koller, Ph.D., ABPP, Legislative Liaison
Isa Mayol Caleron, Graduate Assistant Intern
Nevena Jevtic, Administrative Assistant



Barnes & Klatt P.C.

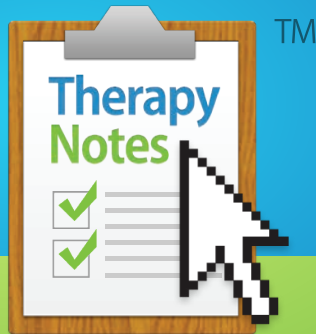
Ann T. Barnes, Psy.D., R.D.
Licensed Clinical Psychologist
Registered Dietitian

825 East Golf Road, Suite 1127, Arlington Heights, Illinois 60005.
Telephone: (847) 981 9200 Fax: (847) 981 9322
www.barnesandklatt.com



TAYLORUHE LLC





TherapyNotesTM

Online Practice Management for Behavioral Health

Proud Sponsor of Today's Complimentary Breakfast

11:30AM Appt with Kyle
Called in to say he may be a little late

12:00PM Appt with Susan
Remember books she borrowed

Create a Progress Note for your appointment on 9/29.

Scheduling & To-Do Lists

Streamline your practice management and workflow. Past appointments are automatically added to your To-Do List. Sync your calendar to your iPhone. Great multi-clinician scheduling features.



My experience with TherapyNotes this past month has been fantastic!

Firstly, the system is easy to navigate, thorough, flexible, and extremely clinically intuitive. Secondly, technical and customer support has been efficient, fast, and very personal. I am leaving another EHR system for TherapyNotes... gladly. I'm very happy that you've created such a quality product. Thank you!

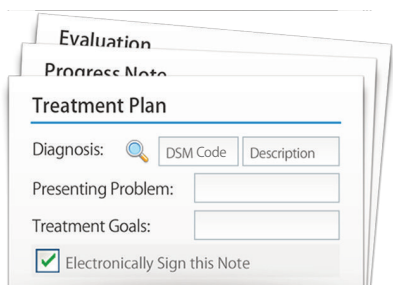
Dr. Christina Zampitella, FT, Licensed Clinical Psychologist

Just want to say that I truly love the system!

It takes all the guesswork out of tracking paperwork. Being able to schedule appointments and then have the system take over and track what is due for each client is wonderful.

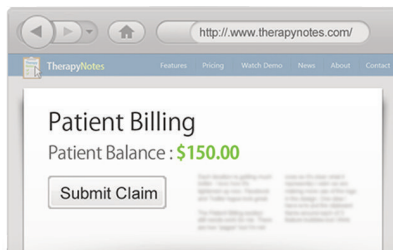
Kathleen Bremer, PCC-S

[Many more stories on TherapyNotes.com!](#)



Patient Notes & EMR

Our form-based system makes it easy to keep up with your notes. Templates are designed specifically for mental health and therapists. Also upload any files to your patient records.



Electronic Billing

Easily submit claims electronically with TherapyNotes EDI! Track balances, view revenue reports, and generate CMS forms, superbills, and patient statements all from within TherapyNotes.

...AND MANY MORE FEATURES!

Appointment Reminders

- Automatic text, phone, and email reminders
- Reduce no shows and decrease expenses

Fully Integrated Credit Card Processing

Swipe or enter patient credit cards

New Patient Portal!

Customers can request appointment times

Special Offer!

Just for Illinois Psychological Association Conference Attendees!

Sign Up and Receive Your First **2 Months FREE!**

Use Promo Code: **ILPACONV16**

Offer Expires 2/1/2017

View Features and Sign Up Today at www.TherapyNotes.com





Illinois Psychological Association

www.IllinoisPsychology.org

67 East Madison Street, Suite 1817
Chicago, IL 60603

PRSR STD
U.S. POSTAGE
PAID
KELMSCOTT



**TRANSFORMATION OF HEALTHCARE:
CHALLENGES FOR THE PRIVATE
AND PUBLIC SECTOR**



AMITA HEALTH™
BEHAVIORAL
MEDICINE

Help is Closer Than You Think

Convenient Locations Right in Your Community

AMITA Health Alexian Brothers Behavioral Health Hospital

- Hoffman Estates

AMITA Health Alexian Brothers Intensive Outpatient Program

- Elk Grove Village

AMITA Health Alexian Brothers Center for Psychiatric Research

- Hoffman Estates

AMITA Health Alexian Brothers Behavioral Health Group

- Elk Grove Village
- Hoffman Estates

AMITA Health Alexian Brothers Medical Group Locations

- Bartlett
- Elk Grove Village
- Hoffman Estates
- Schaumburg

AMITA Health Alexian Brothers Center for Mental Health

- Arlington Heights

We Can Help

Call us 24/7 at **855.383.2224**
or visit us online at **ABBHH.org**